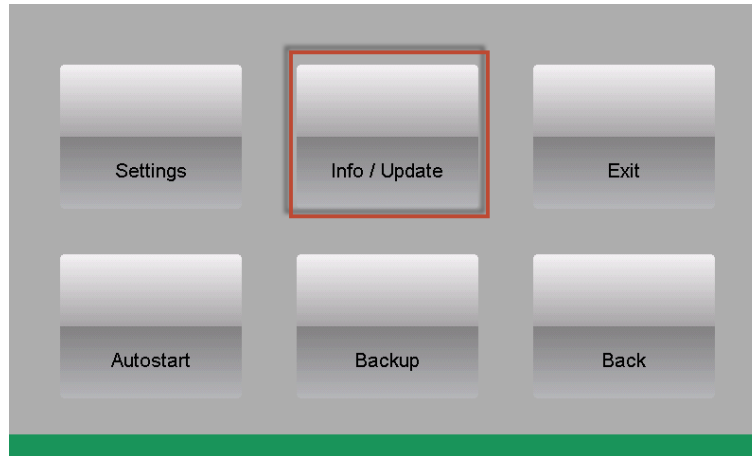


## Image Update

Start the VIPA StartUp Manager on the Touch Panel. Switch to the Info/Update area.



To execute the firmware update press the button [Info/Update]. After clicking on [Info/Update] the current image is displayed under "Panel Information" with panel name, creation date and version number.

With [Create Screenshot] you can make a screen shot of the panel information and select a destination for its storage.

With [Search Image] a list of all the firmware images is shown, which are available on the panel and connected storage media. These images will be listed with create data and version number. Choose your new image

If the selected image is not correct for your panel, an error message will appear. If the image is correct for your panel, in the following message the current installed image version and the new selected image version will be listed.

1. Click on [Update Image] to execute the update. This can take a few seconds.
2. In the following window click on [Finish] to end the update. Then the display gets dark.
3. Switch the power supply off the panel off and on. After the restart the calibration window is opened.
4. Re-calibrate the panel as described. After calibration tap anywhere on the screen. The calibration window will be closed.

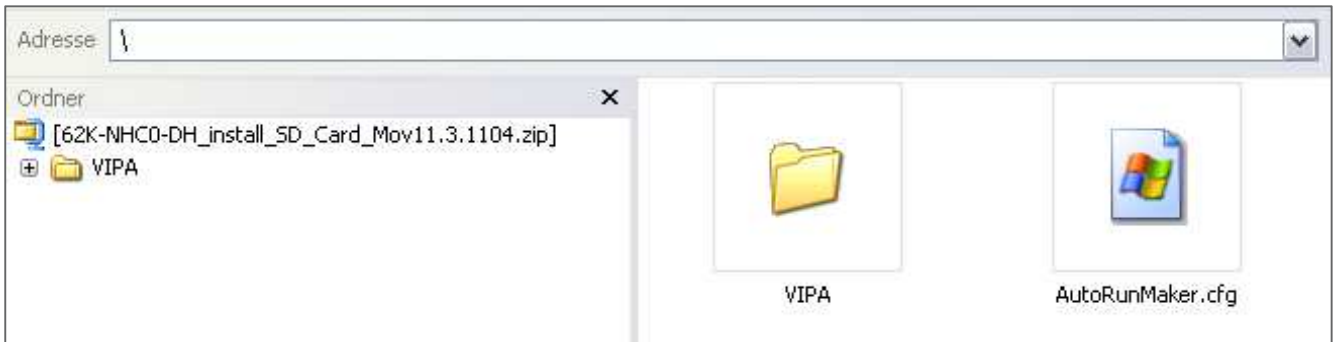
## Transfer from the Movicon and Startup Manager Folders to the ECO Panel

**Stop all running programs!**

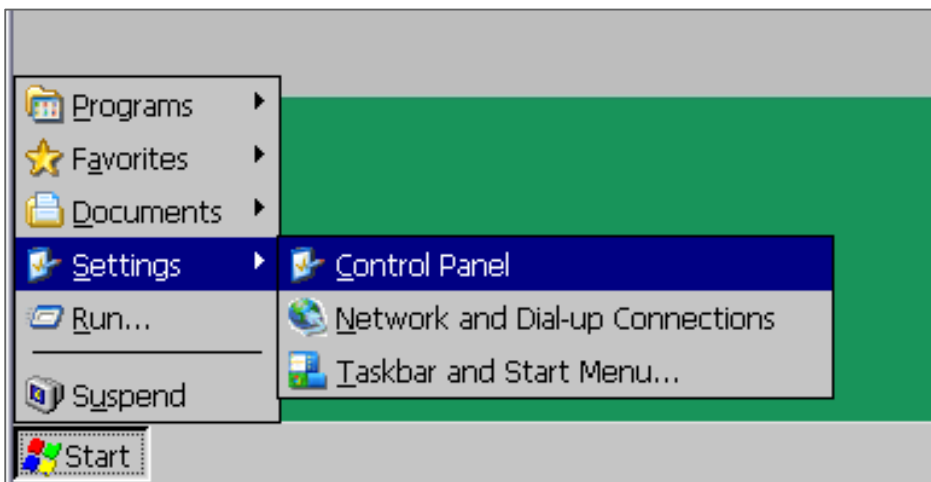
**Close also all background services and programs, like the CEUploadServer from Movicon.**

Copy the corresponding files in the root directory of the SD-Card.

 62H-MDC0- DH\_install\_SD\_Card\_V0.1.0.zip       62K-NHC0- DH\_install\_SD\_Card\_Mov11.3.1104.zip



open Control Panel

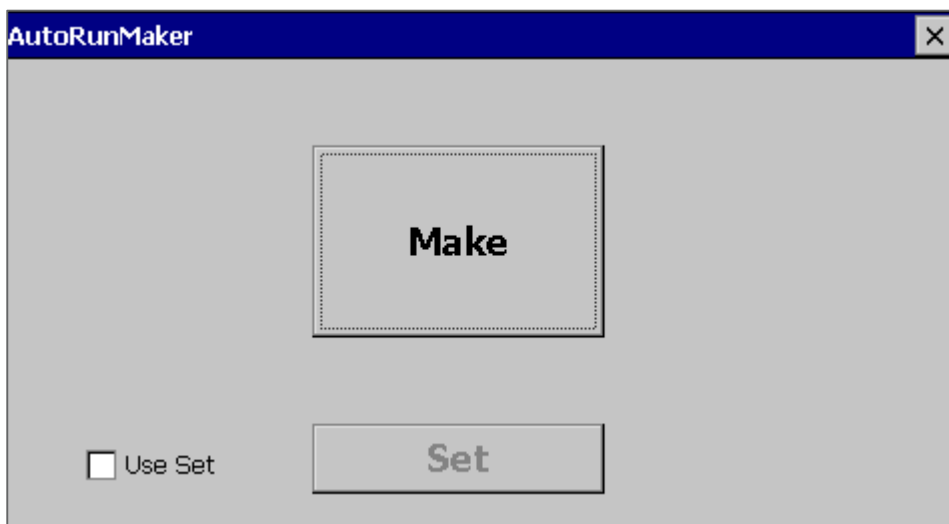


## Transfer from the Movicon and Startup Manager Folders to the ECO Panel

Start AutoRunMaker

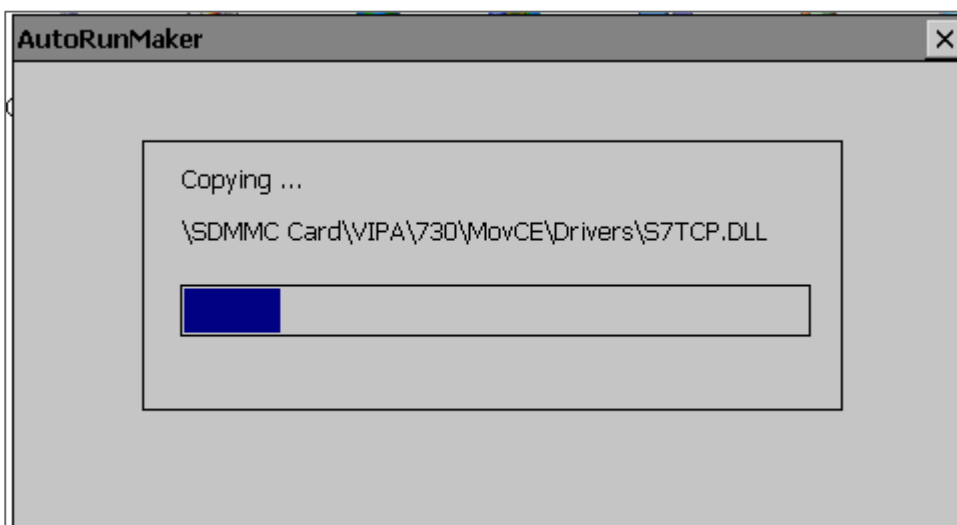


Confirm the following dialog with **MAKE**.



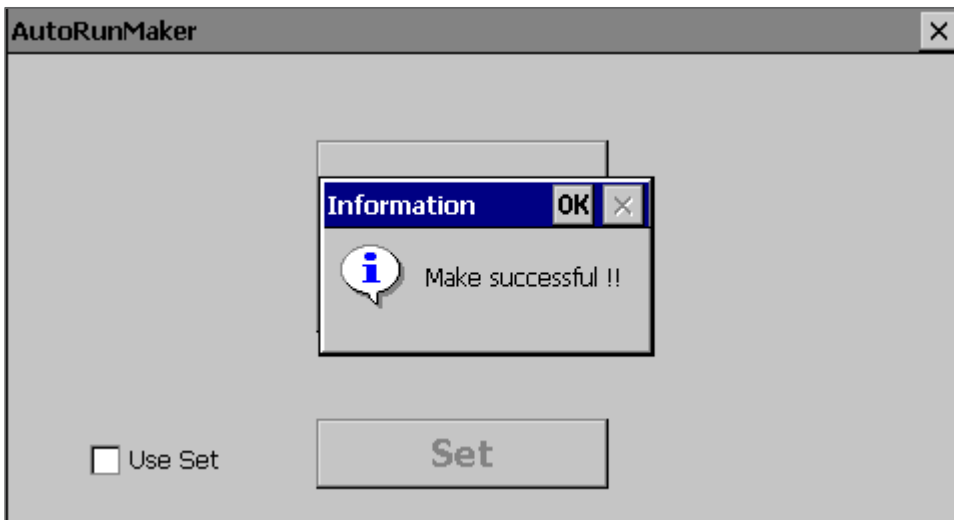
This will copy all files at the right place at the TP

It takes some time without any reaction.



## Transfer from the Movicon and Startup Manager Folders to the ECO Panel

If the installation is ready you will see the „Make successful“ dialog.



Remove the SD-Card

You must save these changes with the Button **Suspend**. After this the Screen will be black and you have to make **“Power off / Power on”**.



## Transfer from the Movicon and Startup Manager Folders to the ECO Panel

After Restart the Startup Manager has start automatically.

